



BE
Kind

Please "Be kind" to our staff. A simple thank you, or a positive review could make the world of difference.

Email:

roccg.swallownestcarecoordinators@nhs.net



Sunday Flu clinic dates as follows **providing the delivery arrives on schedule**

Over 65's 24/09/2023

Under 65's 01/10/2023

We are aware there has been an alteration to the **Shingles** vaccination programme and that you may have had a letter or message from NHS England. This is to include those turning 65 with a birthdate between 1st September 1958 and 31st Aug 1959. As this new programme is quite complex, we will address this increased age group and change to vaccination in our next newsletter in October. No clinics are planned until after the Flu vaccinations are finished.

The **Rotherham Health App** allows you to manage your own health online, 24 hours a day. Every patient in Rotherham can download it and use it to:

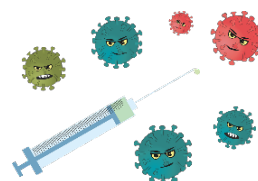
- Request repeat prescriptions
- Request fit notes.
- Update your personal details.
- See test results.
- Book weekend and evening appointments at other surgeries
- Cancel your appointments.



Thursday 28th/Friday 29th September 2023 at Swallownest Health Centre reception.



Swallownest Health Centre



Flu Season

Why is it important to get a flu vaccine?

Flu vaccination can reduce the risk of flu-associated hospitalisation. Flu vaccine prevents tens of thousands of hospitalizations each year. For example, during 2019-2020 flu vaccination prevented an estimated 105,000 flu-related hospitalisations.

Who's eligible?

The below groups will be eligible for a flu vaccine from 1 September 2023:

- All patients aged 65 years and over.
- Those aged 6 months to under 65 years at clinical risk **see next page for further details**
- Pregnant women
- All children aged 2 or 3 years on 31 August 2023
- Primary school aged children (from Reception to Year 6) **These will be done at school**
- Those in long-stay residential care homes
- Carers in receipt of carer's allowance, or those who are the main carer of an elderly or disabled person.
- Close contacts of immunocompromised individuals
- Frontline workers in a social care setting without an employer led occupational health scheme including those working for a registered residential care or nursing home, registered domiciliary care providers, voluntary managed hospice providers and those that are employed by those who receive direct payments (personal budgets) or Personal Health budgets, such as Personal Assistants.

Who is not eligible this year?

Healthy adults 18 – 64 are **not** eligible for a free vaccine however if you wish to receive one these can still be purchased at your local pharmacy.

The 50 - 64-year age group that has previously been vaccinated due to covid has now been stopped.

How do I know if I'm classed as at risk?

There are many conditions that can mean you will be included in the Flu vaccination at risk group. We will list some of the most common below (this is not a comprehensive list). *At risk patients may also be offered a pneumonia vaccine alongside the Flu vaccine, ask the clinician you see in your appointment.*

- Cancer
- Transplant patients
- Diabetes
- Asthma
- COPD
- Heart conditions
- Hypertension
- Obesity
- Kidney/Liver disease
- Renal failure
- Blood disorders
- Parkinsons
- Dementia
- Stroke
- Patients on long term steroids

Childrens Nasal Flu

For information on the live nasal flu vaccine please use the link below
<https://www.nhs.uk/conditions/vaccinations/child-flu-vaccine/>

Who is eligible?

- All Children ages between 2-3 (on 31/08/2023)
- Children aged between 2-17 at risk (see above list)
- If your child is aged between 6 months and 2 years and is at risk, they'll be offered a flu vaccine

- injection instead of the nasal spray as it is not licenced for children under 2.
- All children primary school age – will be done at school only.
- Secondary school children up to year 11 – will be done at school only.

Childrens Nasal flu is on limited ordering this year so **please bear with us** as we will only be able to invite small numbers at a time. For at risk patients who do not wish to wait you may request for your child to have the injection instead.

How will you be contacted?

For patients with a mobile number or email address on record this method will be used and will include a booking link for you to choose your preferred date and time. For any patients without these facilities, we will send one letter only. This is part of our Greener Practice policy to reduce our use of paper.

When are the Flu clinics? There will be two weekend flu clinics anticipated for 24/09/2023 and 01/10/2023 and many more afternoon and evening appointments. These dates will be confirmed and advertised online and in surgery as soon as our flu delivery has arrived.

We will be contacting our patients as soon as our deliveries have arrived in surgery. This is anticipated for the second week of September.

For further information on the flu programme see the NHS website
<https://www.nhs.uk/conditions/vaccinations/flu-influenza-vaccine/>

We will be closed for training on Thursday the 14th of September 2023

DNAs for August 2023 = 4%

See below a breakdown of the DNA'd appointments for August. Patients not attending or cancelling has resulted in the surgery not being able to rebook into these appointments wasting the time of many of our clinicians - GP'S, Nurses, HCA'S, Physician associates, ANP, Nurse associate, GP associate. Also preventing you our patients from getting the access to appointments that you deserve. DNAs have increased this month from previous months by 1%. Doesn't sound like a lot does it? Lets look at the breakdown:

- **Nurses 53 appointments missed.**
- **Blood /blood pressure 53 appointments missed.**
- **Smears 7 appointments missed.**
- **Pink clinic / hypertension 9 appointments missed.**
- **Baby injections 6 appointments missed.**
- **GP 58 appointments missed.**
- **Joint injection clinic 5 appointments missed.**

A total of 191 appointments missed within 1 month.

Please be considerate of other patients and cancel your appointment if you do not intend to use it. As long as you cancel within the latest 30 minutes of the appointment time we can then offer it to someone else.

How to Cancel your appointment at Swallownest Health centre
Please cancel no later than 30mins before your appointment.

- Call the dedicated cancel appointment line on 0114 4333888 opt 1.
- Email syicb-rotherham.swallownestnoreply@nhs.net
- Cancel your appointment via the link on our website, NHS app, Rotherham health app.